

## CASE STUDY

# SUCCESS STORY: STREAMLINING TANK FARM MANAGEMENT

## BACKGROUND

A global leader in Tank Farm Management for a diverse range of products from fuels to new energy resources, located in Singapore Jurong Island wants to embrace a visionary approach to operations and sustainability. They want to unify alarm database from 4 other subsystems: Refinery, Chemical, Fire Safety and Safety system. All these systems are critical in its operation and is important to ensure any critical alarms are dealt with immediately by the operator. Hence they adopted the ProceVue Alarm Management system.

## KEY CHALLENGES

- **Unify Alarm Database:** Unify the 4 subsystems which are critical in its operations.
- **Safety Compliance:** Meeting high safety standards and regulatory compliance required in the handling of hazardous materials.
- **Incident Prevention:** Needing a predictive approach to identify and mitigate risks before they result in incidents.
- **Operational Continuity:** Ensuring reliable and uninterrupted operations in a sector where downtime can have significant consequences.
- **Data Overload:** Dealing with the vast amount of alarm data generated by their systems and making sense of it for timely decision-making.
- **Alarm Fatigue:** Reducing the number of non-critical alarms that can desensitize operators to potential dangers.
- **Historical Data Analysis:** The need for detailed historical data to understand trends, improve processes, and predict future system performance.
- **Real-Time Monitoring and Control:** Having a real-time view of all storage and logistic operations to respond swiftly to any critical events.

## AT A GLANCE

### CHALLENGES

- Unify Alarm Database
- Safety Compliance
- Incident Prevention
- Operational Continuity
- Data Overload
- Alarm Fatigue
- Historical Data Analysis
- Real-Time Monitoring and Control

### GOALS

- Enhanced Safety Protocols
- Regulatory Compliance
- Operational Excellence
- Reduction of Alarm Fatigue
- Process Optimization





## SOLUTION OFFERED:

### ProcessVue Sequence of Events (SOE):

- **SOE:** Captures and records alarm and event data in real-time with precise time-stamping, providing an accurate sequence for analysis.
- **Event Analysis:** Enables detailed examination of event sequences leading up to, during, and after an alarm, aiding in incident investigation and preventive measures.
- **Alarm Management:** Improves alarm response times and helps to prioritize critical alarms, thereby enhancing overall safety and reducing risks.
- **Historical Data Archiving:** Stores alarm and event history for long-term analysis, regulatory audits, and compliance reporting.
- **Data Retrieval:** Facilitates easy access to historical data for trend analysis and decision-making support.
- **Trend Identification:** Assists in identifying recurrent problems and operational inefficiencies that may lead to alarms.
- **Compliance Support:** Aids in adhering to industry standards like ISA-18.2, IEC 62682, and EEMUA 191 by providing comprehensive documentation of alarms and events.
- **User-friendly Interface:** Offers a simple and intuitive user interface for monitoring and reviewing alarm data.
- **Integration Capability:** Seamlessly integrates with existing systems, allowing for a unified view across different platforms and technologies.
- **Scalability:** Designed to scale with the growth of operations, handling increasing amounts of data without performance degradation.

## RESULTS

- **Improved Operational Safety:** Enhanced alarm management leads to quicker responses to critical conditions, reducing the risk of accidents and ensuring a safer work environment.
- **Increased Compliance:** Meets and exceeds industry regulations and standards for alarm management, ensuring legal compliance and avoiding potential fines.
- **Optimized Alarm Systems:** Reduces nuisance alarms, focusing operator attention on significant events, thus minimizing alarm fatigue.
- **Enhanced Decision Making:** Real-time and historical data analysis supports informed decision-making, enabling proactive adjustments and improvements.
- **Operational Efficiency:** Streamlines processes by identifying inefficiencies and recurrent issues, leading to more efficient operations and reduced downtime.
- **Better Risk Management:** Provides tools for analyzing sequences of events, helping to predict and prevent future incidents before they occur.
- **Enhanced Visibility:** Offers comprehensive visibility into the operational status and alarm conditions, improving overall management and control.

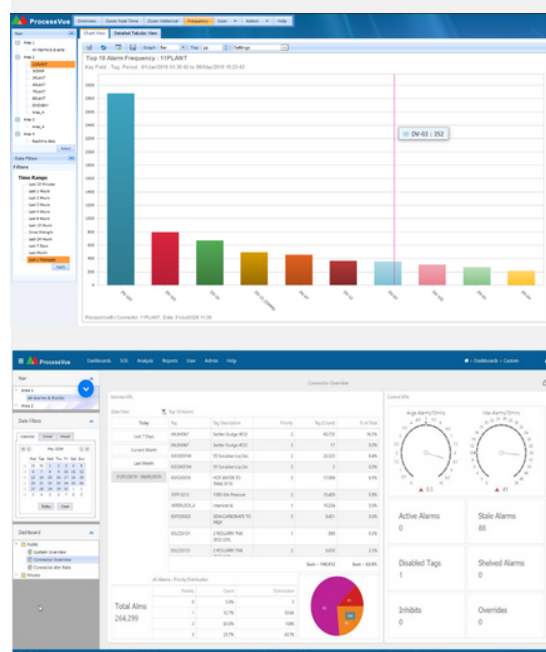
## AT A GLANCE

### SOLUTION

- ProcessVue SOE
- ProcessVue Archiver

### RESULTS

- Improved Operational Safety
- Increased Compliance
- Optimized Alarm Systems
- Enhanced Decision Making
- Operational Efficiency
- Better Risk Management
- Enhanced Visibility



FOR MORE INFORMATION,  
VISIT  
[WWW.ISDNSOFTWARE.COM](http://WWW.ISDNSOFTWARE.COM)